



LOTSEARCH

Spatial Intelligence | Mapping Risk

**Australia's leading provider of environmental reports
helping identify risk to land and property**

Product Updates

We're pleased to share a set of powerful enhancements to our [Enviro Pro](#) reports for sites in **South Australia**, designed to make critical environmental insights clearer, more accessible, and more actionable.

Smarter Hydrogeological Insights

We've refined how key hydrogeological and groundwater data is presented, helping you quickly interpret the information. Updates to drillhole and aquifer information mean groundwater-related records are now easier to read and understand directly within report tables, reducing friction and saving time during analysis.

Clearer Topography with Digital Elevation Data

To provide stronger site context, we've introduced a digital elevation model (DEM) into SA reports. This brings:

- Minimum and maximum elevation data for each site
- Enhanced contour mapping for a more intuitive view of surrounding landforms

These improvements offer a clearer picture of how a site sits within its environment-critical for risk assessment and planning.

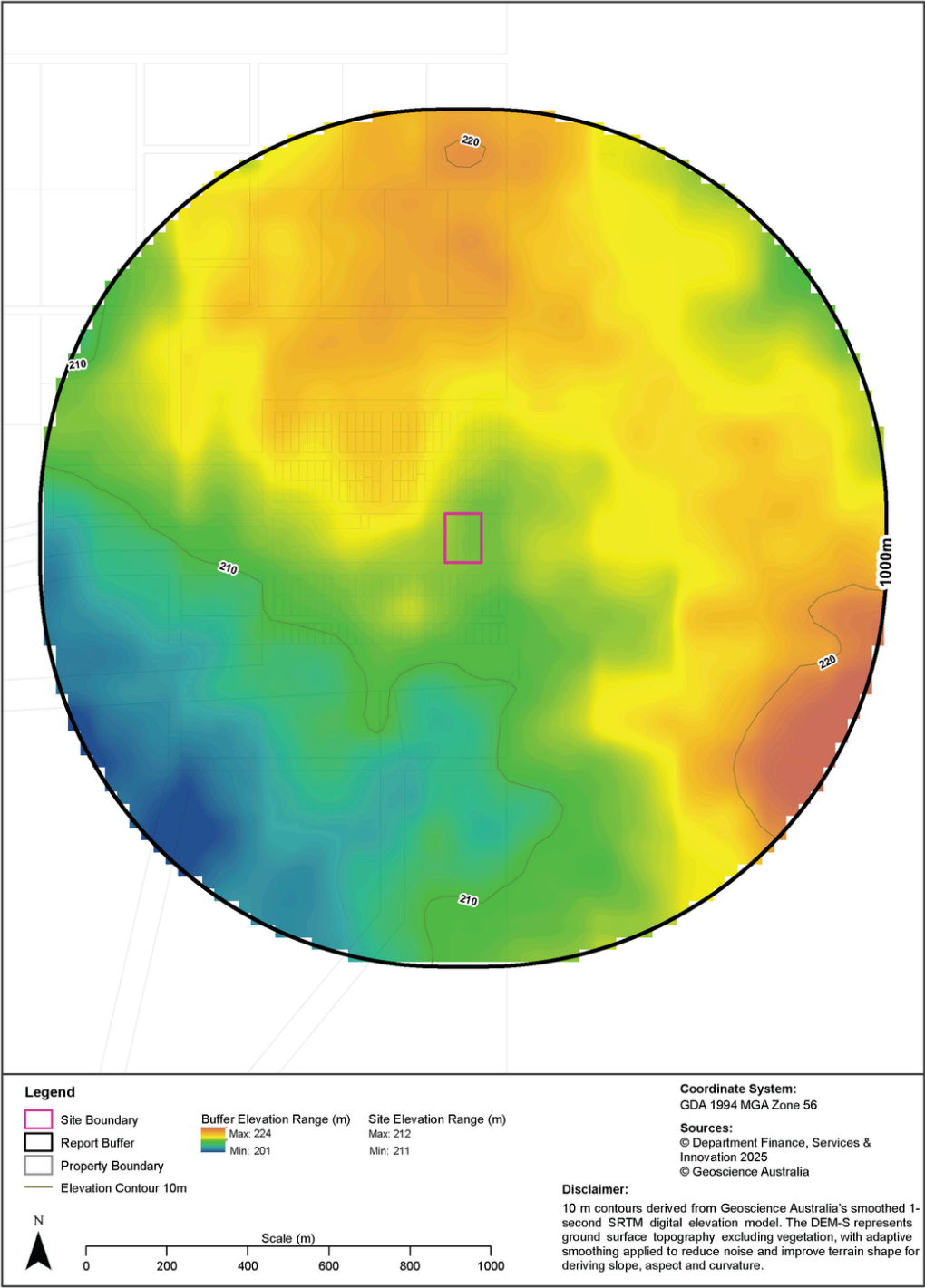
Better Context for Better Decisions

Together, these upgrades strengthen the environmental story behind each report, supporting more confident desktop assessments, compliance reviews, and due diligence workflows.

These changes are all about making complex environmental data easier to interpret so you can focus on making informed decisions, faster.

Elevation

Lot 200 and 201 Elder Terrace / 202 Waite Terrace, Cockburn, SA 5440



We're heading to EnviroDrinks!

April 30 2026, Melbourne VIC



Lotsearch is proud to be sponsoring the upcoming Melbourne EnviroDrinks event run by the Australian Land and Groundwater Association (ALGA), the Australian Contaminated Land Consultants Association (ACLCA Victoria) and the Environment Institute of Australia and New Zealand (EIANZ).

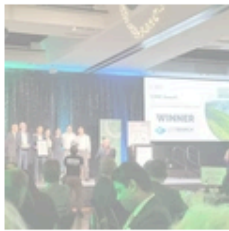
Bringing together over 200 professionals from across the land, groundwater and environmental sectors, EnviroDrinks is a great opportunity to connect, share insights, and stay engaged with the broader industry.

Our product specialists **Franco and Lachlan** will be there on the night, so if you're attending be sure to say hello. We always enjoy catching up with clients, partners and peers in a more relaxed setting.

We look forward to seeing you there.

Want to catch us at our next event?

We're excited to announce the launch of the brand-new Events Page on our website - a central hub designed to keep our clients and partners informed about where we've been, and where we're headed next.



What's Coming Up Next?

Our Events Page will be regularly updated with:

- Upcoming event dates and locations
- Details on how to attend or register

Industry events are a great opportunity to;

- See our latest product updates in action
 - Meet the team behind Lotsearch
- Learn how others are using our services
- Share your feedback and ideas directly with us

We look forward to seeing you at an upcoming event.

Spotlight On Our People - Meghan Wilson



Role: Graduate Geospatial Analyst

My superpower: I will obsess over a puzzle until it is solved, and I always figure it out

Something about me that might surprise you is: I dropped out of high school

Best advice you're ever received: People are more worried about themselves than judging you, so don't worry about it

My friends say I'm: Ready for any adventure

What are you working on at the moment? Graduating university with my Bachelors of Geospatial Science

On a Sunday you'll find me: Being lazy at home with my partner and my cat

My last holiday was to: Japan (it's amazing)

What's a typical day for you? Doing something physical (yoga, weights, walk) and hanging out with friends at a pub and then watching movies or reading in the evening

In a previous life I was: A warrior princess

What's your favourite word? Juvenescent

I like to do my bit by: Always offering a helping hand

My favourite quality in people is: Willingness to laugh

What are some of the challenges you think the next generation will face? Climate change


If you could have lunch with one person alive or dead, who would it be? Jane Austen

One day I would love to: Say I've been on every continent (maybe one day every country)

Sign up to our newsletter

Add your email...

Subscribe

 Follow us on LinkedIn

Call us on
02 8287 0680

Share on social



<https://www.lotsearch.com.a>

