



# LOTSEARCH

Spatial Intelligence | Mapping Risk

---

**Australia's leading provider of environmental reports  
helping identify risk to land and property**

---

## **Streamlining PSIs / Environmental Assessments**

Environmental consultants don't need to be GIS experts to start unlocking the power of our spatial data.

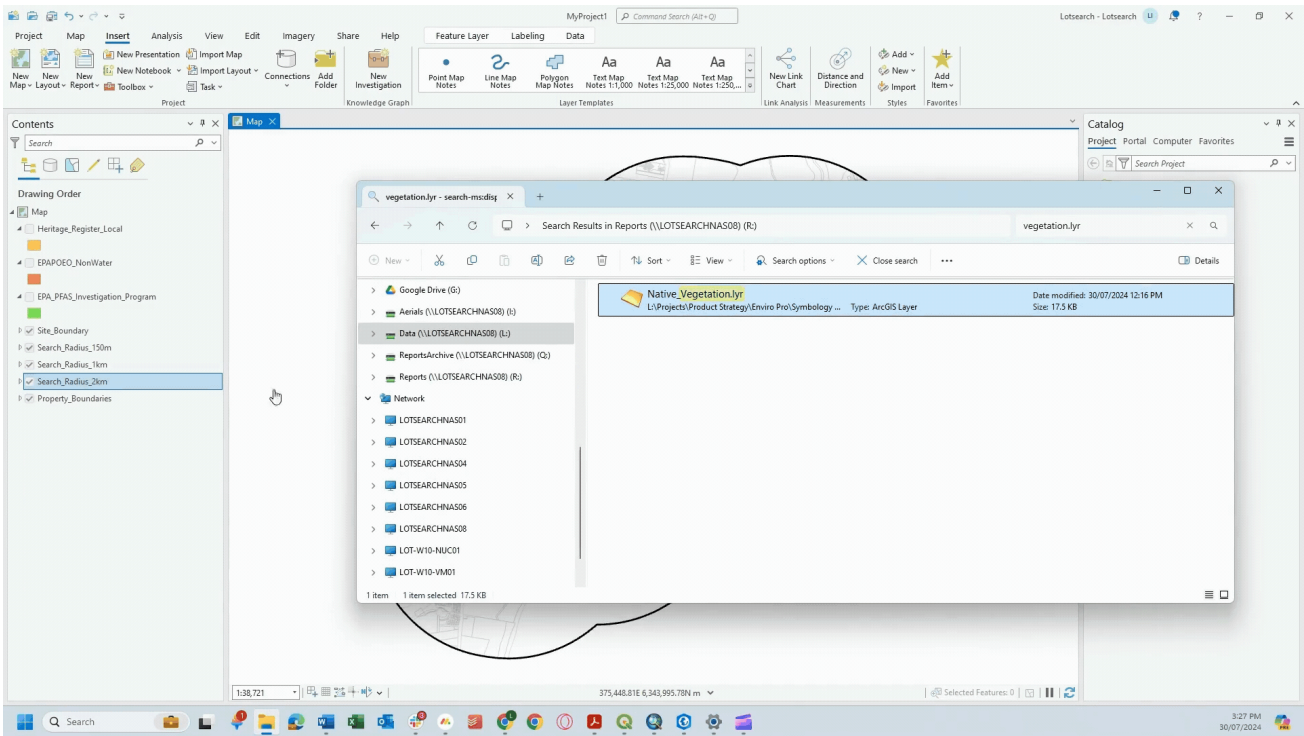
With free tools like QGIS, you can easily upload our GIS data layers into one clear visual map.

It's a simple, accessible way to better understand site risks, identify patterns and strengthen your reporting without investing in expensive software or extensive training.

In just a few clicks, you can move from static data to meaningful insights helping you make faster, more informed decisions and deliver greater value to your clients. If you feel confident you can move further by marking up simple site maps, plans and figures.

See the example below of how these can be easily added to your GIS software and platforms.

[Contact us](#) if you would like a sample or an online demonstration of this feature.



## Lotsearch and ALGA: Recent Events

**ALGA Groundwater Fate and Transport Symposium: Mass Flux – The Why, the Where and the How (25th - 26th February)**



Last month at the ALGA Fate and Transport Symposium we had a fantastic time connecting with clients, colleagues and industry peers at the Lotsearch stand.

A big congratulations to the winners of our \$100 Westfield voucher for taking out the Lotsearch Quick Fire Quiz. It was great to see so many people getting involved, putting their knowledge to the test and embracing a bit of friendly competition.

Ben Withnall - Nation Partners

Oscar Godfrey - EP Risk

We'd also like to sincerely thank everyone who stopped by to say hello, learn more about what we're working on, and share insights from the field. We're already looking forward to the next one.

Have you explored Lotsearch's new research capabilities yet? We're helping clients access an enhanced layer of environmental intelligence to support contaminated land assessments, land use planning, and risk-based decision-making.

To book a personalised demo, email [support@lotsearch.com.au](mailto:support@lotsearch.com.au)

**ALGA Emerging Professionals Training and Networking Expo  
(26th March)**



It was great to be part of ALGA Emerging Professionals Training and Networking Expo last week.

We appreciated the conversations at our booth and the strong interest in how data is shaping better environmental decision-making.

A highlight of the day was Howard's demo, "Identifying Potential Contamination Using Aerial Photos, Maps & Data", and the discussions that followed around practical applications in real-world workflows.

As part of our involvement, we're continuing the conversation beyond the conference with an exclusive "Ask the Founders" session at our North Sydney office. This small-group session is designed to give emerging professionals direct access to insights, mentorship and open discussion with our co-founders.

At the same time, we're continuing to work closely with industry leaders to support faster, more confident decisions through tools like our Enviro Pro report - bringing together environmental data and risk insights in a more accessible way.

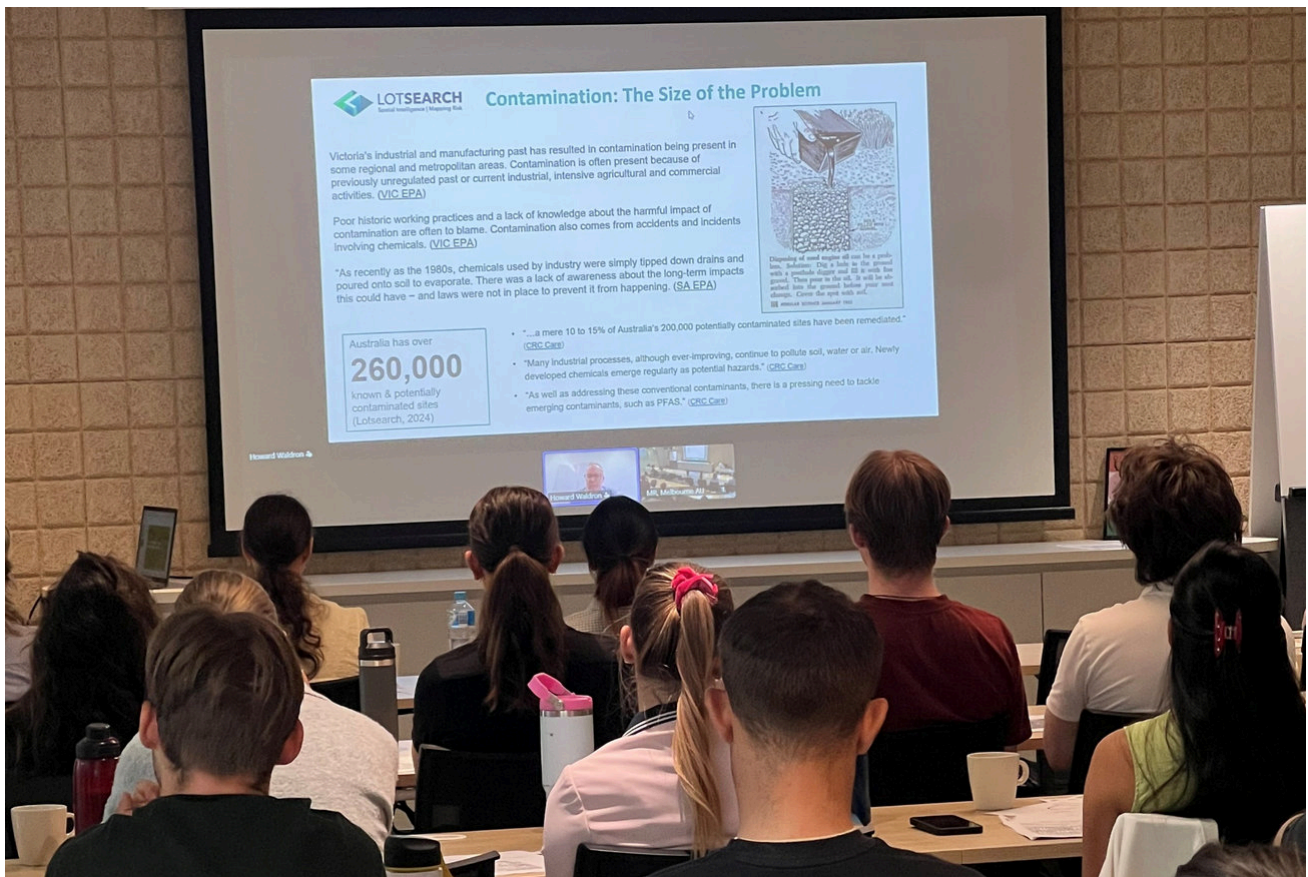
Thank you to ALGA for hosting a great event and to everyone who took the time to connect with us.

Further information about our product suite can be found on our new website:

<https://www.lotsearch.com.au/>

---

## **ACLCA Presentation - Identifying Known & Potential Contamination Sources**



Lotsearch Co-Founder Howard Waldron recently presented as part of the ACLCA CPD Modules 1–3: Introduction to Environmental Site Assessment, a training program designed to equip early-career professionals with the foundational skills required in contaminated land assessment. These modules form part of ACLCA’s broader focus delivering relevant, practical training that supports both new entrants and developing practitioners in the industry.

Howard’s involvement is part of Lotsearch’s ongoing commitment to supporting the next generation of environmental professionals. By contributing to industry-led education initiatives we aim to share practical insights, strengthen technical capability, and help emerging consultants build confidence as they navigate the complexities of environmental site assessment.

---

## Spotlight On Our People - Bradley Wallace



**Role:** Spatial Data Officer

**My claim to fame is:** I have made money playing video games competitively

**Something that keeps me up at night is:** Nothing, I need my sleep

**Something about me that might surprise you is:** I've never drank alcohol, and I never plan to

**Best advice you're ever received:** Everything adds up

**I am all about:** Self improvement

**My friends say I'm:** Hardworking

**My last holiday was to:** Alaska

**On a Sunday you'll find me:** Working, Studying, Hiking or somewhere else outdoors.

**My favourite quality in people is:** Determination

**What are some of the challenges you think the next generation will face?** AI and Isolation

**One day I would love to:** Travel the Pacific Northwest, British Columbia and more of Alaska


---

## Sign up to our newsletter

Add your email...

Subscribe

---

 Follow us on LinkedIn

Call us on  
02 8287 0680

Share on social



<https://www.lotsearch.com.au>

